

KS  
K S K Y  
ITALIANSTYLE

K-STYLE!



***“We are KSky.”***  
***“We are Italian Style!”***

Moved by experience and by beauty as inspiring muse, we have conceived a make up brand.

KSky reflects the Italian style, it do not disappoint need of design, style and accessibility.

KSky products make protagonists all girls and women enhancing their beauty.

Every personality who dress K Sky find the right meeting between quality, range and attractive prices.

All KSky products are easy to apply, they boast of a great lasting, a complete adherence and a performing texture.

A particular attention is reserved also to easy and stylish packaging.

This new line is the right answer to beauty and wellness request. Have you ever thought about turning make-up in a sensory experience?

The K-Style will be the key that will open perception doors, with an unique style at revolutionary price.

Products are parabens free and without aggressive substances. They are suitable for sensitive skin thanks to extreme softness and high tolerability index.

Products are dematologically tested and contain moisturizing, nourishing, and protective substances.

# I N D E X

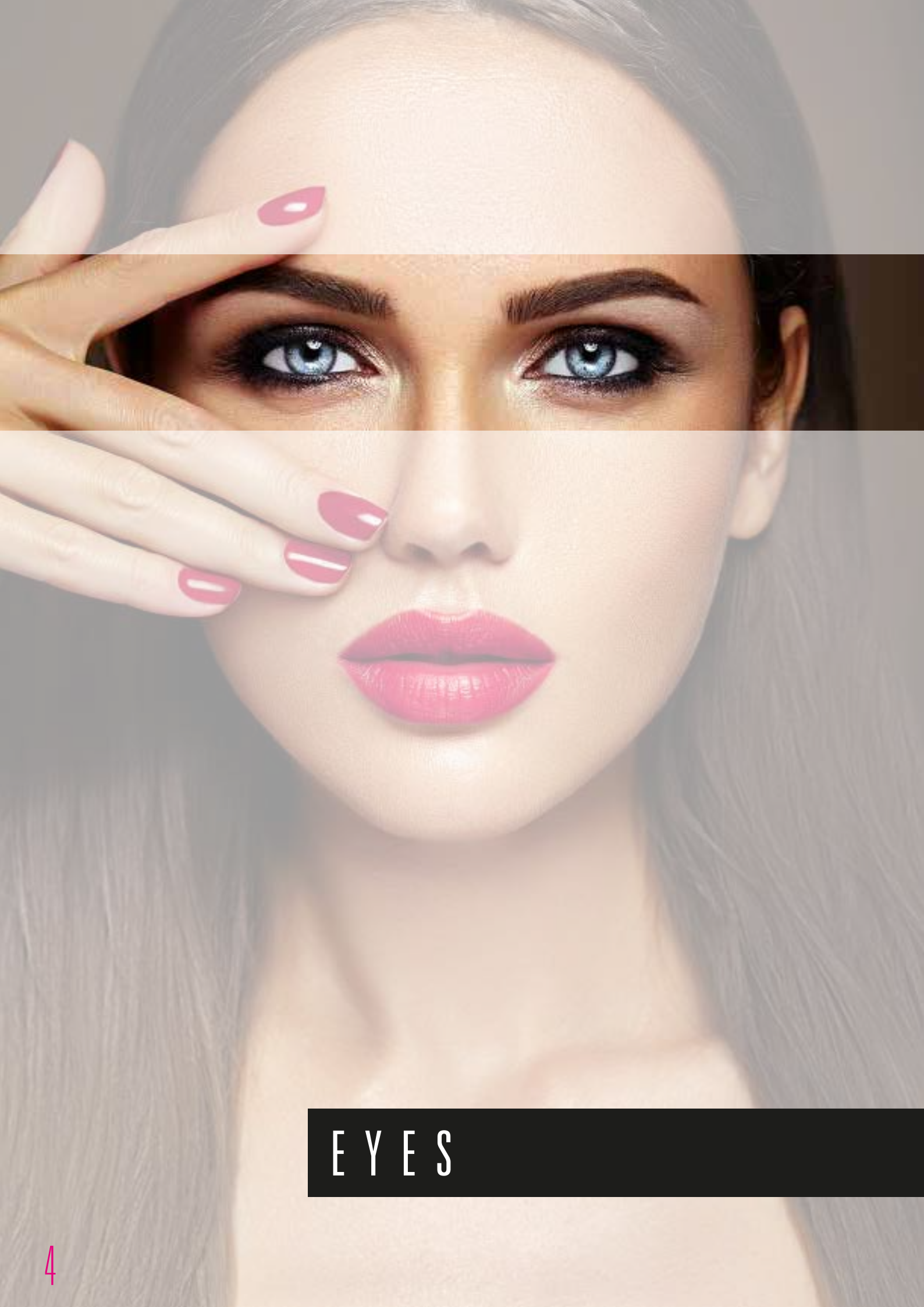
EYES 4-9

LIPS 10-13

FACE 14-19

NAILS 20-21

DISPLAYS 22-23



EYES



**SINGLE EYESHADOW**

Compact eyeshadow composed by high pigmentation powder with soft and silky texture easy to apply and to fade, in way to make immense your glance. You can obtain any result with these elegant and particular shades.  
 Matte formulation: with a matte finish and intense colors create a natural effect.  
 Suitable for shades.  
 Shimmer formulation: for a brighter light effect.  
 Glitter formulation: extremely pearly colors, that with the iridescence of glitter create an extraordinary result. Long lasting.

**K-EYES STYLE!**

It is not what it shows,  
 but what it lets image



**PALETTE EYESHADOW**

In the special versatile solution, formed by four nuances, the eyeshadow palettes allow to get smokey eyes. From the lighter to the darker shade to achieve games of shades of color on the eyelid. It is what your eyes need for characterize the look.



KS 401  
Nude



KS 402  
Smokey



KS 403  
Colorfull



KS 404  
Intense Dark

# AMAZING EYELASHES

Beautiful in a blink.

Create the right contrast to bring out the color and depth of the eyes!



**VOLUME XXX  
MASCARA**  
KS 301 Black

A waxes mix makes the mascara texture rich and creamy. The brush totally conical is designed for capture every eyelash with precision. The wide base, which is shrinking to tip, wraps the eyelashes one to one, even the shortest, for open an intense glance. Volumizes upper eyelashes then reveals the lower ones.

**VOLUME  
MASCARA WATERPROOF**  
KS 302 Black

The mascara that resists all weather conditions: the volumizing action leaves the perfect eyelashes without weighing them down. Perfection translated into many hours of light eyelashes, silky and dive proof: suitable for the pool and for who is sport addict.

**EXTREME VOLUME MAX  
MASCARA**  
KS 303 Black

High impact volume that causes a deeper look. The brush is convex, its "double wave" shape loads more product on the bristles and releases it on the lashes without creating lumps. Strong, long and thick eyelashes for an extreme look.

**FALSE EYELASHES MAX  
MASCARA**  
KS 304 Black

Surprising opening fanshaped eyelashes: the mascara with thin brush with thick and separated bristles gives a multidimensional effect: elongated, thick and ordered eyelashes as if they were fake.

# AN IRRESISTIBLE FEMINITY

IN A SENSUAL EYELASHES BANG!



**HD HIGH DEFINITION  
MASCARA**  
KS 305 Black

Comb the eyelashes at 180° opening your eyes. The brush is slightly curved with thick bristles allow to pread formula in a uniform way. The eyelashes are wrapped by a film that captures them one by one defining and curving them perfectly. High resolution look!

**ULTRABLACK  
MASCARA**  
KS 306 Black

The intense black of the ultrablack creates a net contrast on the face making protagonist the undisputed gaze. The dish-cleaner curler for eyelashes wraps the look giving him one sophisticated, elegant and charming look.

**ALL IN ONE  
MASCARA**  
KS 307 Black

The brush has the shape hourglass and thanks to its design allows get on all the lashes, giving volume, intensity and definition. Magnetic glance!

**LENGHTENING CURVING  
MASCARA**  
KS 308 Black

A mega bending eyelashes that bewitches and lengthens the expression of who wears it. The brush allows maximum grip of eyelashes thanks to the bristles thick and of different length. The formula generates intense, curved and stretched out eyelashes. A look ready to talk!

# WHAT A PASSION THESE LINES

I'd love to have all right curves . . . like that!



## **LIQUID EYELINER** KS 351 Black

The fluid and velvety eyeliner formula flows on eyelids easily. Lines decided, from those more thin to thicker ones, underline a black line intense and highly defined. The applicator soft lets you stretch your glance... make it feline.

## **INK LINER WATERPROOF** KS 352 Black

An intense look across the line. Thanks to the rigid felt applicator the result is defined, precise and performing. The waterproof formula ensures one long and impeccable hold for hours, without leaving traces.





# Outline your emotions



**WATERPROOF  
EYELINER PENCIL**  
MATOW 01 Black

Soft, impeccable and with a strong black color. Essential to draw eyes and versatile to create a personalized look. Easy to apply, with a waterproof formula that allows a long lasting makeup. The choice also right for those who are sport addict.

**EYELINER PENCIL**  
MATO 01 Black

Soft and flowing, from decisive stretch and full and intense color. Wrap the eye correcting or changing its shape. A pencil line on lashes base will make every look more intense. For a more natural effect just fade the pencil. Exceptional seal.



MATO 02  
Indaco



MATO 03  
White



MATO 04  
Olive Green



MATO 05  
Light Blue



MATO 06  
Dark Green



MATO 07  
Dark Brown



MATO 08  
Gold



MATO 09  
Nude



MATO 10  
Natural Pink



MATO 11  
Violet



MATO 12  
Green



MATO 13  
Light



MATO 14  
Light Purple



**CRAYON SURCILS**  
MATS 50 Brown





# LIPS

# K-LIPS STYLE!



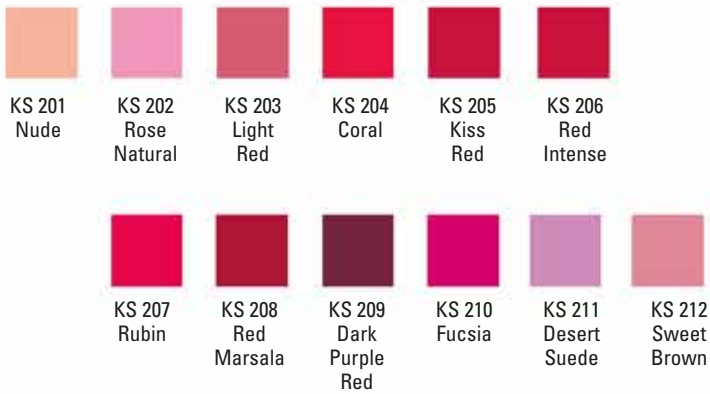
## LIQUID LIPSTICK

Matte Liquid Lipstick that slides on the lips adhering perfectly at their surface. The makes it compact and polished. The creaminess of the product gives a feeling of comfort and softness. The shades from the most classic to the most original render irresistible lips. It does not stain or drool. Instant drying. It has a long seal.



there is something of glamour!

# YOUR LIPS, OUR INSPIRATION



## INTENSE CLASSIC LIPSTICK

The peculiarity of this lipstick is the sensation of lightness that leaves on the lips once worn. It adheres to the lips like a veil, protecting even the most delicate sensitive skin. The intense colors of classic lipstick are full and multiple shades, suitable for every occasion. Matte and metallic finish.



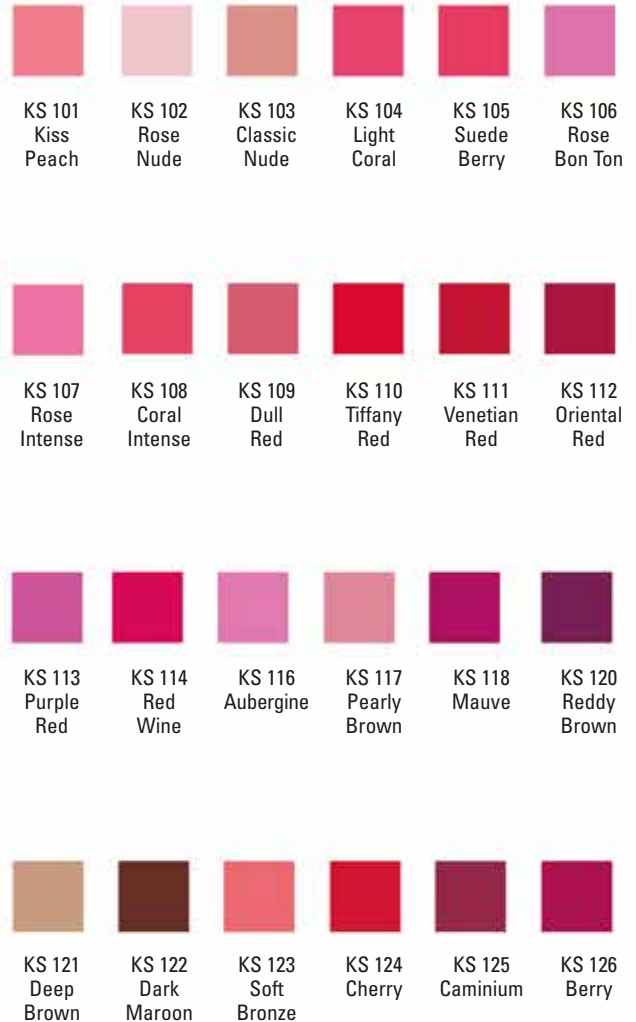
# ENGAGED IN A UNIQUE STYLE!

Women don't know

what they want,

but women know

how to get it.



## LONG LASTING LIPSTICK

Lipsticks from bright shades: the lipsticks follow with precision the lips contour covering them of a lit and thick veil of color. Its rich and creamy texture is ultra-light and comfortable, emphasizes the lips beauty. Making them soft and voluminous, hydrated and seductive. Extreme lasting.



MATL 01  
Red



MATL 02  
Fuchsia



MATL 03  
Plum



MATL 04  
Brown



MATL 05  
Dark Nude



MATL 06  
Shiny Brown



MATL 07  
Coral Red



MATL 08  
Intense Red



### LIPLINER PENCIL

It encloses the lips defining them perfectly and enhancing their natural form, prevents smears and continues the seal of lipsticks and gloss. A definite color release and the accuracy of line guarantee a make-up professional lips.





FACE

# K-FACE STYLE!

lights the beauty



KS 507



KS 501 Nude    KS 502 Naturel    KS 503 Medium



KS 504 Classic Ivory    KS 505 Natural Nude    KS 506 Warm Sand

## CONCEALER PALETTE

For each defect. The palette is formed by four concealer nuances, compact and practical to always carry with itself. It minimizes the discrepancy of the face, it neutralizes the skin imperfections and improves the appearance of the complexion illuminating it in amazing way.

## STICK CONCEALER

The concealer in the stick format allows an easy and precise application. His formula guarantees a perfect coverage, and an hydrated and protected skin. He intervenes on the eye contour fighting effectively the signs of the tiredness and hiding stains and imperfections.

## LIQUID CONCEALER

The liquid concealer, from fluid and creamy consistency, it is light and modular. The thin and adherent texture guarantees feasibility. Offers total coverage, high efficacy and long lasting. It confers to skin a natural appearance minimizing effectively the imperfections of the skin.



# A SHINY SKIN

## Summer Essence



KS 611  
Amber

KS 612  
Sun

KS 613  
Bronze

### BRONZER

A compact bronzer that gives a naturally tanned look. Create some play of light on the face thanks to the Soft Focus sublimating light powders that illuminate the complexion. The texture ultra-thin and impalpable adheres perfectly to the face. The skin is velvety and protected thanks to the solar filters contents.





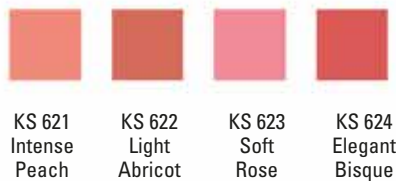


### COMPACT POWDER

A velvety powder formulated with natural ingredients. The face is enriched with a touch of color impalpable and with an elegant and natural finish. The raw materials from which it is composed, obtained with new ones technologies, access to the skin to breathe. Some derived from Olive oil is held moisturizing and soothing. The micronized talons increases the adherence to the skin and the held, while the reflective micas give brightness to the face.

pureté

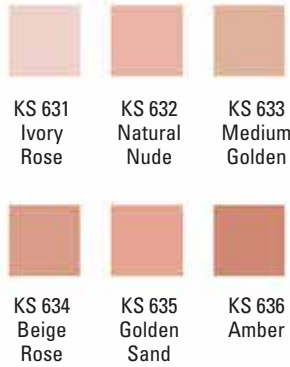
de la couleur



### BLUSH

A light and soft product that defines the facial features by illuminating cheeks. The appearance is inebriated and radiant. The very fine powders based of micronized pigments of which it is compound, ensure a good one yield and modular colors for a delicate effect. The Vitamin E, with a moisturizing and antioxidant power protects the skin by keeping it extremely soft.





### FLUID FOUNDATION

The fluid foundation aims to achieve a natural result on the skin. Its creamy, rich texture of active ingredients, makes the skin soft, bright and uniform. The feeling that leaves on leather is of absolute comfort. Her moisturizing formulation fits to normal and mixed skin, dry and fat. High coverage!



**LET IT SHINE**



### LIQUID FOUNDATION

The texture of the foundation is silk. It spreads very well. Bring the skin back of the face to its natural beauty thanks to an action deeply moisturizing. Covers imperfections and enhances the natural brightness during all the day. The complexion appear healthy and velvety. Suitable for all skin types. Integrated solar filter





### STICK FOUNDATION

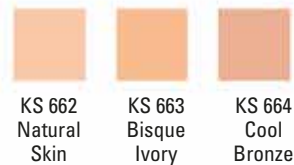
This light foundation once applied becomes like a second skin. Comfortable, compact, easy to carry always with you, easy to apply even in the most difficult points.

Thanks to its dense texture, almost pasty, it is indicated for the normal, dry or oily skins. It niforms the color and tone your face.

It has one triple anti-aging action: moisturizing, protective and detoxifying. It Contains Vitamin E, Corn Starch and Aloe Vera.



**YOUR FACE!**



### COMPACT FOUNDATION

An ultra light compact foundation for a bright and natural finish.

The consistency is velvety and really light: once stretched on the skin it becomes impalpable, covers in uniform way the face and illuminates throughout the day to always look at the top!

Suitable for all types of complexion.



**NAILS**

# K-NAILS STYLE

**l'élégance  
commence  
ici**

|                         |                             |                              |                                   |                              |                                 |                          |                           |                                   |
|-------------------------|-----------------------------|------------------------------|-----------------------------------|------------------------------|---------------------------------|--------------------------|---------------------------|-----------------------------------|
|                         |                             |                              |                                   |                              |                                 |                          |                           |                                   |
| KS 901<br>Base<br>& Top | KS 902<br>Matte<br>Top Coat | KS 903<br>Hardener           | KS 904<br>Anti<br>Nail-<br>Biting | KS 905<br>Lengthener         | KS 906<br>Pailleté              | KS 907<br>Pearl<br>White | KS 908<br>French<br>White | KS 909<br>French<br>Pink<br>Flesh |
|                         |                             |                              |                                   |                              |                                 |                          |                           |                                   |
| KS 910<br>Flesh         | KS 911<br>Pink Chic         | KS 912<br>Pink               | KS 913<br>Pearl<br>Pink           | KS 914<br>Rose<br>Fuchsia    | KS 915<br>Iridescent<br>Fuchsia | KS 916<br>Plum           | KS 917<br>Violet<br>Blue  | KS 918<br>Orange                  |
|                         |                             |                              |                                   |                              |                                 |                          |                           |                                   |
| KS 919<br>Geranium      | KS 920<br>Fire<br>Red       | KS 921<br>China<br>Red       | KS 922<br>Imperial<br>Red         | KS 923<br>Pearl<br>Red       | KS 924<br>Tender<br>Green       | KS 925<br>Sea<br>Water   | KS 926<br>Green           | KS 927<br>Forest<br>Green         |
|                         |                             |                              |                                   |                              |                                 |                          |                           |                                   |
| KS 928<br>Celestial     | KS 929<br>Blue              | KS 930<br>Pearl<br>Blue      | KS 931<br>Black                   | KS 932<br>Hazelnut           | KS 933<br>Face<br>Powder        | KS 934<br>Red-<br>Brown  | KS 935<br>Metal<br>Copper | KS 936<br>Metallic<br>Silver      |
|                         |                             |                              |                                   |                              |                                 |                          |                           | <b>novità</b>                     |
| KS 937<br>Coral Red     | KS 938<br>Glycine           | KS 939<br>Metallic<br>Purple | KS 940<br>Fuchsia                 | KS 941<br>Chocolate<br>Brown | KS 942<br>Brown                 | KS 943<br>Light<br>Brown | KS 944<br>Violet          | <b>novità</b>                     |



## LONG LASTING NAIL POLISH

Long lasting nail polish boasts an innovative formula of the highest quality.

Hypoallergenic, long duration and without aggressive substances, so as to preserve health and the integrity of the nails.

The film of application is thin and the finish is ultra bright. Good smoothness in application thanks to the flat professional brush.



# K - E X P O



**TOURNING DISPLAY**  
cm 65 x 45 x 160h



**COUNTER DISPLAY**  
cm 125 x 80 x 90h



**WALL DISPLAY**  
cm 96 x 40 x 200h

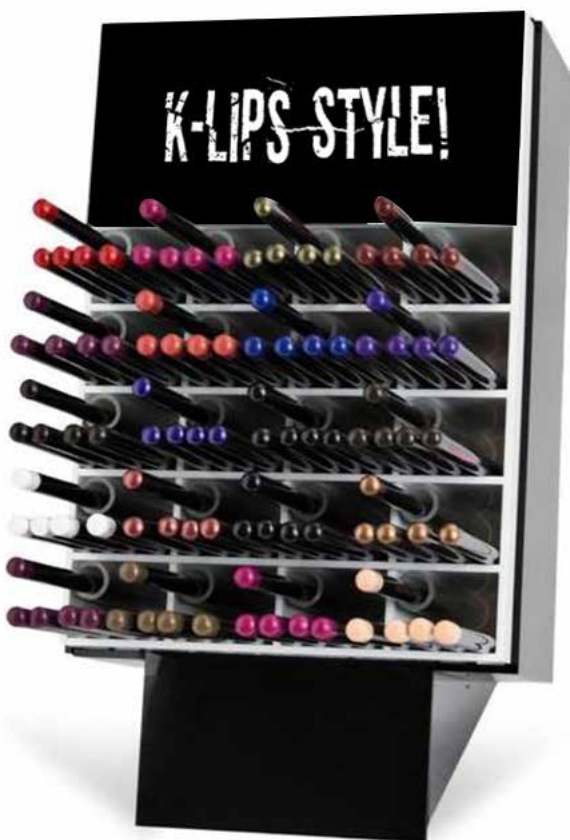


**EYESHADOW PALETTE DISPLAY**  
cm 31 x 27 x34h

**DISPLAY MASCARA**  
cm 31 x 27 x34h



**ROUGE A LEVRES LIQUIDE LONGU  
E TENUE PRÉSENTOIR**  
cm 31 x 27 x34h



**EYE AND LIP PENCIL DISPLAY**  
cm 18 x 28 x 35h



k-style

k-lips

k-nails

K-eyes-STYLE

ITALIAN STYLE



**MARELEVA S.R.L.**  
Gattatico RE - Italy  
Tel. +39 0522 678 126  
sales@mareleva.it